



GIVE YOUR FAMILY A TRUE FLORIDA VACATION IN A LUXURY DETACHED VILLA
2005 Ruby Red Blvd, West Kissimmee, Florida, FL 34711
Weekly Rental From £400

**Wallace
Quinn**
& Co.
SOLICITORS/ESTATE AGENTS





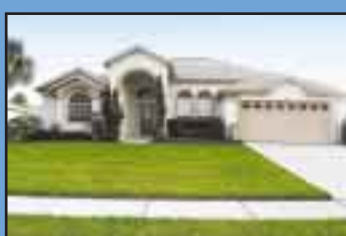
STAY IN A NEW LUXURY VILLA WITH YOUR OWN PRIVATE POOL FOR LESS THAN A HOTEL.

DESCRIPTION

Superb opportunity to rent a Detached Bungalow nestled within this beautiful area in the heart of Kissimmee. This property is close to all major attractions.

The spacious accommodation comprises Foyer. Living Room. Dining Room. Fully Equipped Fitted Kitchen. Family Room. Four Double Bedrooms (Master en suite). Three Bathrooms. Covered Lanai leading to fully screened private Pool. Double Garage.

- Large Family room overlooking Pool
- Stunning Lounge.
- Formal Dining Room for Special family Meals.
- Fully Fitted Kitchen.
- Breakfast Nook.
- Master En-suite Bedroom.
- Second Queen Sized Bedroom.
- Twin Sized Bedroom.
- Bedroom Four with Twin Beds
- Covered Lanai for al Fresco Dining.
- Screened pool with large covered Lanai.
- Communal Swimming Pool, Tennis Courts and Childs Tot Lot.



*GIVE YOUR FAMILY A TRUE FLORIDA VACATION
IN A LUXURY DETACHED VILLA*

*2005 Ruby Red Blvd,
West Kissimmee, Florida, FL 34711*

Weekly Rental From £400

**Wallace
Quinn**
& Co.
SOLICITORS/ESTATE AGENTS



DISTRICT

Slightly removed from the hustle and bustle of the US Hwy 192 area is the Subdivision of Greater Groves, which is North on Highway U.S. 27.

Greater Groves offers you a convenient location for all of Orlando's amenities and Theme Parks with easy access to US Hwy 192. Within this community of Greater Groves there is a communal Swimming pool with covered seating area, basketball courts, sand volleyball court and a children's play park.

West Kissimmee and U.S. Highway 192, is one of the most popular locations for British visitors seeking `The Great American Experience` whether your ideal holiday is Theme Parks, a round of Golf or a day at one of the many glorious Beaches this is an ideal and convenient location to be based at.

This area has grown to be an ideal and popular entrance to the Magic Kingdom Theme Parks, Universal, and all major attractions and of course Orlando International and Sanford Airports, this location offers you some of the least congested routes and thoroughfares throughout Orlando.

Blending in with a city and rural setting Greater Groves and the U.S. 27 is a favourite for the locals and overseas visitors in navigating the area.

Its convenience and quick access will always remain a good choice for those who want to be close to the action, but still want to enjoy the comforts of the more natural setting.



*GIVE YOUR FAMILY A TRUE FLORIDA VACATION
IN A LUXURY DETACHED VILLA*

*2005 Ruby Red Blvd,
West Kissimmee, Florida, FL 34711*

Weekly Rental From £400

**Wallace
Quinn**
& Co.
SOLICITORS/ESTATE AGENTS

GETTING THERE AND GETTING AROUND

All major commercial airlines fly into Orlando International Airport or the smaller Sanford International Airport.

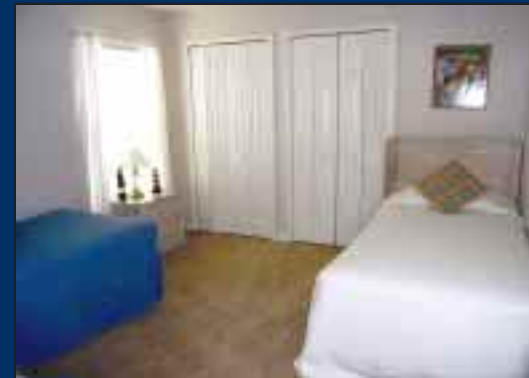
A car is the best way to see this sprawling area and visit Walt Disney World and Universal theme parks and all major attractions.

BOOKING ENQUIRIES

Please call Wallace Quinn & Co. Telephone. 0141 771 3911 Monday-Friday 9am-5pm. Call Centre 0141 572 4113.

NOTE

Whilst every care has been taken to ensure accuracy during the preparation of these particulars, they are intended for guidance only. If there is any point which is critical to your interest or which you find misleading, please contact Wallace, Quinn & Co. where further information is available. Services and appliances (not tested).



GIVE YOUR FAMILY A TRUE FLORIDA VACATION IN A LUXURY DETACHED VILLA

2005 Ruby Red Blvd,
West Kissimmee, Florida, FL 34711

Weekly Rental From £400

**Wallace
Quinn**
& Co.
SOLICITORS/ESTATE AGENTS

